

Report No.: **158277008a 001**

Page 1 of 16

**Client:** ONE FOR FUN LIMITED

**Contact Information:** 3-5 Cambuslang Way, Gateway Office Park, Cambuslang, Glasgow, G32 8ND

**Manufacturer's name:** USD002

**Test item(s):** Toys

**Identification/  
Model No(s):** SHARK HEAD TUB / TIGER HEAD TUB  
Item No.: SV21305 / SV21306

**Sample obtaining method:** Sending by customer

**Condition at delivery:** Test item complete and undamaged.

**Sample Receiving date:** 2023-08-30

**Testing Period:** 2023-08-31 to 2023-09-06

**Place of testing:** Chemical laboratory Hong Kong, Toys laboratory Hong Kong

**Test Specification:**

Please refer to "Test Result Summary List" on page 2 for details

**Other information:**

Country of Origin: China

The provided age grade of the item(s) : Not Provided

Per client's request, the item(s) was/ were tested for the age of over 3 years.

Packaging provided: No

Provided sample size: 3 sets

For and on behalf of  
TÜV Rheinland Hong Kong Ltd.



Amenda Yung/  
Senior CS Manager

2023-09-11

Date

Name/Position



Wong Yiu Tong , Tommy/  
Senior Lab Manager

2023-09-11

Date

Name/Position

Sample information is provided by customer. Test result is drawn according to the kind and extent of tests performed.

This test report relates to the above mentioned test sample. Without permission of the test center this test report is not permitted to be duplicated in extracts. This test report does not entitle to carry any safety mark on this or similar products.

"Decision Rule" document announced in our website (<https://www.tuv.com/landingpage/en/qm-gcn/>) describes the statement of conformity and its rule of enforcement for test results are applicable throughout this test report.

**Test Result Summary :*****Test Specification:******Test result:***

1 ASTM F963-17: Mechanical and physical (As per client request, Clause 5-Labeling requirements, 6-Instructional Literature and 7-Producer's Marking were excluded in this test report)	PASS
2 ASTM F963-17: Flammability on solids and soft toys	PASS
3 ASTM F963-17 Sect. 4.3.5.1, CPSIA Sect. 101, and Safe Drinking Water and Toxic Enforcement Act of 1986 (Proposition 65): Total lead content in paint and coating materials	PASS
4 ASTM F963-17 Sect. 4.3.5.2, CPSIA Sect. 101, and Safe Drinking Water and Toxic Enforcement Act of 1986 (Proposition 65): Total lead content in substrate materials	PASS
5 ASTM F963-17 Sect. 4.3.5.1 and 4.3.5.2 : Soluble heavy metal	PASS
6 CPSIA Section 108 as amended by 16 CFR 1307 : Phthalates	PASS
California Safe Drinking Water and Toxic Enforcement Act of 1986 (CA Prop 65): DEHP, BBP, DBP, DIDP, DnHP content	PASS

**Test Report No.: 158277008a 001**

Page 3 of 16

**Material List:**

Item: SHARK HEAD TUB / TIGER HEAD TUB

Item No.: SV21305 / SV21306

Material No.	Material	Color	Location
M001	Whole Product	Multicolor	[#SV21305]-whole product;[#SV21306]-whole product
M002	Coating	Multicolor	[#SV21305]-mouth of hammerhead shark;[#SV21306]-body, eyes of tiger head tub
M003	Coating	ivory/ deep pink/ light orange	[#SV21306]-mouth of tiger head tub
M004	Coating	black/ white/ deep orange	[#SV21306]-body of tiger, zebra, gorilla, eyes of polar bear
M005	Coating	black/ white/ grey	[#SV21306]-body of elephant
M006	Coating	red/ shiny grey	[#SV21306]-body of rhino
M007	Coating	brown/ black/ light orange	[#SV21306]-body of giraffe
M008	Coating	deep brown/ light brown/ black	[#SV21306]-body of camel
M009	Coating	multicolor	[#SV21306]-body of deer
M010	Coating	black/ dark yellow	[#SV21306]-body of leopard
M011	Coating	black/ muddy yellow/ brown	[#SV21305]-body of seal;[#SV21306]-body of lion
M012	Coating	bright grey/ red/ reddish brown	[#SV21306]-body of hippo
M013	Coating	dull black	[#SV21305]-body of shark head tub
M014	Coating	multicolor	[#SV21305]-body of shark head tub
M015	Coating	shiny black/ white	[#SV21305]-nose of shark head tub, body of dolphin
M016	Coating	multicolor	[#SV21305]-body of penguin, crab, turtle
M017	Coating	shiny grey/ light yellow/ black	[#SV21305]-body of walrus
M018	Coating	white/ brownish red	[#SV21305]-body of octopus
M019	Coating	light blue/ black	[#SV21305]-body of light blue dolphin
M020	Coating	light grey/ black	[#SV21305]-body of hammerhead shark
M021	Coating	pale grey/ black	[#SV21305]-body of needlefish, fish
M022	Coating	shiny black/ dark green/ white	[#SV21305]-body of whale

**Test Report No.: 158277008a 001**

Page 4 of 16

M023	Plastic	yellow	[#SV21306]-body of tiger head tub
M024	Plastic	white	[#SV21305]-body of seal, dolphin, penguin, crab, turtle, walrus, octopus, hammerhead shark, needlefish, fish, whale, light blue dolphin;[#SV21306]-body of tiger, zebra, gorilla, polar bear, elephant, rhino, giraffe, camel, deer, leopard, lion, hippo
M025	Plastic	deep grey	[#SV21305]-body of shark head tub
M026	Plastic	translucent white	[#SV21305]-ring of head tub; [#SV21306]-ring of head tub
M027	Plastic	translucent	[#SV21305]-lid, handle of head tub; [#SV21306]-lid, handle of head tub

**Test Report No.: 158277008a 001**

Page 5 of 16

**1.ASTM F963-17: Mechanical and physical**
**Test result:**

Test No:	T001
Material No:	M001
<b>4. Safety requirements</b>	
4.1 Material Quality (visual check)	PASS
4.7 Accessible edges	PASS
4.8 Projections	PASS
4.12 Plastic film	PASS
<b>5. Labeling requirements</b>	
5.1 Federal government requirements	Not Conducted
5.2 Age grading labeling	Not Conducted
5.3 Safety labeling requirements	Not Conducted
5.4 Aquatic toys	Not Conducted
5.5 Crib and playpen toys	Not Conducted
5.6 Mobiles	Not Conducted
5.7 Stroller and carriage toys	Not Conducted
5.8 Toys intended to be assembled by an adult	Not Conducted
5.9 Simulated protective devices	Not Conducted
5.10 Toys with functional sharp edges or points	Not Conducted
5.11 Small objects, small balls, marbles and balloons	Not Conducted
5.12 Toy caps	Not Conducted
5.13 Art materials	Not Conducted
5.16 Promotional materials	Not Conducted
5.17 Magnets	Not Conducted
<b>6. Instructional literature</b>	
6.1 Definition and description	Not Conducted
6.2 Crib and playpen toys	Not Conducted
6.3 Mobiles	Not Conducted
6.4 Toys intended to be assembled by an adult	Not Conducted
6.7 Toys in contact with food	Not Conducted
6.8 Toy chests	Not Conducted
<b>7. Producer's markings</b>	
7.1 Name and address of the producer or the distributor	Not Conducted
7.3 Toy chests	Not Conducted

**Test Report No.: 158277008a 001**

Page 6 of 16

**Use and Abuse Tests:**

The submitted samples were undergone the use and abuse tests in accordance with FHSA 16 CFR and whichever is applicable the tested age grade.

Age Category	Impact Test	Flexure Test	Torque Test	Tension Test	Compression Test
0-18 Months 16 CFR 1500.51	10 x 4.5 ft	120 Arc 30 Cycles 10 lbs	2 in-lbs	10 lbs	20 lbs
19-36 Months 16 CFR 1500.52	4 x 3 ft	120 Arc 30 Cycles 15 lbs	3 in-lbs	15 lbs	25 lbs
37-96 Months 16 CFR 1500.53	4 x 3 ft	120 Arc 30 Cycles 15 lbs	4 in-lbs	15 lbs	30 lbs

The clause and/or sub-clause would be indicated only in the test report whichever applicable. The comprehensive result report is available upon request.

**Test Report No.: 158277008a 001**

Page 7 of 16

**2.ASTM F963-17: Flammability on solids and soft toys****Test result:**

Test No:	T001
Material No:	M001
<b>4.2 Flammability on solids and soft toys</b>	PASS

The burning rate of the most severe part = IBE

Note: Maximum permissible burning rate = 0.1 Inch/sec.

**Abbreviation:** IBE = Ignite But Self-extinguish

**Test Report No.: 158277008a 001**

Page 8 of 16

**3.ASTM F963-17 Sect. 4.3.5.1, CPSIA Sect 101, and Safe Drinking Water and Toxic Enforcement Act of 1986 (Proposition 65): Total lead content in paint and coating materials**

Test method: CPSC-CH-E1003-09.1 (Microwave method)

Test result:

Test No.	Material No.	Test Parameter	Unit	RL	Regulatory Requirement	Test Result
T001	M002	Lead Content	ppm	10	90	< RL
T002	M003	Lead Content	ppm	10	90	< RL
T003	M004	Lead Content	ppm	10	90	< RL
T004	M005	Lead Content	ppm	10	90	< RL
T005	M006 + M013	Lead Content	ppm	10	90	< RL
T006	M007	Lead Content	ppm	10	90	< RL
T007	M008	Lead Content	ppm	10	90	< RL
T008	M009	Lead Content	ppm	10	90	< RL
T009	M010 + M019	Lead Content	ppm	10	90	< RL
T010	M011	Lead Content	ppm	10	90	< RL
T011	M012	Lead Content	ppm	10	90	< RL
T012	M014	Lead Content	ppm	10	90	< RL
T013	M015 + M018	Lead Content	ppm	10	90	< RL
T014	M016	Lead Content	ppm	10	90	< RL
T015	M017	Lead Content	ppm	10	90	< RL
T016	M020 + M021	Lead Content	ppm	10	90	< RL
T017	M022	Lead Content	ppm	10	90	< RL

Abbreviation: < = less than  
 RL = Reporting Limit  
 ppm = parts per million

Remark:

- \*1 CA Prop. 65 -Total lead content-
- Paint or surface coating in products shall not contain more than 0.009% (90 ppm) total lead content
  - Other components in product shall not contain more than 0.01% (100 ppm) total lead content



**Test Report No.: 158277008a 001**

Page 9 of 16

**4.ASTM F963-17 Sect. 4.3.5.2, CPSIA Sect. 101, and Safe Drinking Water and Toxic Enforcement Act of 1986 (Proposition 65) : Total lead content in substrate materials**

Test method: CPSC-CH-E1001-08.3 and CPSC-CH-E1002-08.3 (Microwave method)

Test result:

Test No.	Material No.	Test Parameter	Unit	RL	Regulatory Requirement	Test Result
T001	M023 + M024 + M025	Lead Content	ppm	10	100	< RL
T002	M026 + M027	Lead Content	ppm	10	100	< RL

Abbreviation: < = less than  
RL = Reporting Limit  
ppm = parts per million

Remark:

- \*1 CA Prop. 65 -Total lead content
- Paint or surface coating in products shall not contain more than 0.009% (90 ppm) total lead content
  - Other components in product shall not contain more than 0.01% (100 ppm) total lead content

**Test Report No.: 158277008a 001**

Page 10 of 16

**5.ASTM F963-17 Sect. 4.3.5.1 and 4.3.5.2 : Soluble heavy metal**

Test method: For paint and similar surface-coating materials: ASTM F963-17 Section 8.3.2 - 8.3.4 Method to Dissolve Soluble Matter for Surface Coatings, Preparation of Test Samples and Test Procedures

For substrate: ASTM F963-17 Section 8.3.5 Soluble Element Test Method for Substrate Materials

This requirement applies to the coating and substrate materials which the sample weight is greater than 10 mg

Test result:

Test No.	Material No.	[mg/kg]							
		Sb	As	Ba	Cd	Cr	Pb	Hg	Se
		Maximum Permissible Limit of Any Toy Materials except Modelling Clay							
		60	25	1000	75	60	90	60	500
		Maximum Permissible Limit of Modelling Clay							
		60	25	250	50	25	90	25	500
		RL							
		2.5	2.5	2.5	2.5	2.5	2.5	2.5	2.5
T001	M002	< RL	< RL	2.6	< RL	< RL	< RL	< RL	< RL
T002	M003	< RL	< RL	< RL	< RL	< RL	< RL	< RL	< RL
T003	M004	< RL	< RL	7.4	< RL	< RL	< RL	< RL	< RL
T004	M005	< RL	< RL	4.6	< RL	< RL	< RL	< RL	< RL
T005	M006	< RL	< RL	16.2	< RL	< RL	< RL	< RL	< RL
T006	M007	< RL	< RL	< RL	< RL	< RL	< RL	< RL	< RL
T007	M008	< RL	< RL	8.9	< RL	< RL	< RL	< RL	< RL
T008	M009	< RL	< RL	18.3	< RL	< RL	< RL	< RL	< RL
T009	M010	< RL	< RL	3.7	< RL	< RL	< RL	< RL	< RL
T010	M011	< RL	< RL	6.1	< RL	< RL	< RL	< RL	< RL
T011	M012	< RL	< RL	5.7	< RL	< RL	< RL	< RL	< RL
T012	M013	< RL	< RL	3.3	< RL	< RL	< RL	< RL	< RL
T013	M014	< RL	< RL	3.6	< RL	< RL	< RL	< RL	< RL
T014	M015	< RL	< RL	< RL	< RL	< RL	< RL	< RL	< RL
T015	M016	< RL	< RL	5.6	< RL	< RL	< RL	< RL	< RL
T016	M017	< RL	< RL	< RL	< RL	< RL	< RL	< RL	< RL
T017	M018	< RL	< RL	< RL	< RL	< RL	< RL	< RL	< RL
T018	M019	< RL	< RL	28.8	< RL	< RL	< RL	< RL	< RL
T019	M020	< RL	< RL	2.9	< RL	< RL	< RL	< RL	< RL
T020	M021	< RL	< RL	7.9	< RL	< RL	< RL	< RL	< RL
T021	M022	< RL	< RL	2.8	< RL	< RL	< RL	< RL	< RL
T022	M023	< RL	< RL	< RL	< RL	< RL	< RL	< RL	< RL
T023	M024	< RL	< RL	< RL	< RL	< RL	< RL	< RL	< RL
T024	M025	< RL	< RL	< RL	< RL	< RL	< RL	< RL	< RL
T025	M026	< RL	< RL	< RL	< RL	< RL	< RL	< RL	< RL
T026	M027	< RL	< RL	< RL	< RL	< RL	< RL	< RL	< RL

**Test Report No.: 158277008a 001**

Page 11 of 16

Abbreviation: < = less than  
RL = Reporting Limit  
mg/kg = milligram per kilogram

## Remark:

\* Migration results of eight elements shown are the adjusted analytical results

<i>Element</i>	<i>Sb</i>	<i>As</i>	<i>Ba</i>	<i>Cd</i>	<i>Cr</i>	<i>Pb</i>	<i>Hg</i>	<i>Se</i>
<i>Analytical Correction (in %)</i>	60	60	30	30	30	30	50	60

**Test Report No.: 158277008a 001**

Page 12 of 16

**6. Phthalates content**

Test Method: Ref. to CPSC-CH-C1001-09.4

**Test Result:**

Test No.				T001	T002	T003
Material No.				M002	M003	M004
Test Parameter	CAS NO	Unit	RL	Result	Result	Result
Diethylhexyl phthalate (DEHP)	117-81-7	%	0.01	< RL	< RL	< RL
Dibutyl phthalate (DBP)	84-74-2	%	0.01	< RL	< RL	< RL
Benzylbutyl phthalate (BBP)	85-68-7	%	0.01	< RL	< RL	< RL
Diisobutyl phthalate (DIBP)	84-69-5	%	0.01	< RL	< RL	< RL
Diisononyl phthalate (DINP)	28553-12-0, 68515-48-0	%	0.01	< RL	< RL	< RL
Diisodecyl phthalate (DIDP)	26761-40-0, 68515-49-1	%	0.01	< RL	< RL	< RL
Di-n-pentyl phthalate (DnPP)	131-18-0	%	0.01	< RL	< RL	< RL
Di-n-hexyl phthalate (DnHP)	84-75-3	%	0.01	< RL	< RL	< RL
Dicyclohexyl phthalate (DCHP)	84-61-7	%	0.01	< RL	< RL	< RL
Conclusion: CPSIA Section 108 as amended by 16 CFR 1307				Pass	Pass	Pass
Conclusion: CA Prop 65 DEHP, BBP, DBP, DIDP and DnHP content				Pass	Pass	Pass

Test No.				T004	T005	T006
Material No.				M005	M006 + M013	M007
Test Parameter	CAS NO	Unit	RL	Result	Result	Result
Diethylhexyl phthalate (DEHP)	117-81-7	%	0.01	< RL	< RL	< RL
Dibutyl phthalate (DBP)	84-74-2	%	0.01	< RL	< RL	< RL
Benzylbutyl phthalate (BBP)	85-68-7	%	0.01	< RL	< RL	< RL
Diisobutyl phthalate (DIBP)	84-69-5	%	0.01	< RL	< RL	< RL
Diisononyl phthalate (DINP)	28553-12-0, 68515-48-0	%	0.01	< RL	< RL	< RL
Diisodecyl phthalate (DIDP)	26761-40-0, 68515-49-1	%	0.01	< RL	< RL	< RL
Di-n-pentyl phthalate (DnPP)	131-18-0	%	0.01	< RL	< RL	< RL
Di-n-hexyl phthalate (DnHP)	84-75-3	%	0.01	< RL	< RL	< RL
Dicyclohexyl phthalate (DCHP)	84-61-7	%	0.01	< RL	< RL	< RL
Conclusion: CPSIA Section 108 as amended by 16 CFR 1307				Pass	Pass	Pass
Conclusion: CA Prop 65 DEHP, BBP, DBP, DIDP and DnHP content				Pass	Pass	Pass

**Test Report No.: 158277008a 001**

Page 13 of 16

Test No. Material No.				T007 M008	T008 M009	T009 M010 + M019
Test Parameter	CAS NO	Unit	RL	Result	Result	Result
Diethylhexyl phthalate (DEHP)	117-81-7	%	0.01	< RL	< RL	< RL
Dibutyl phthalate (DBP)	84-74-2	%	0.01	< RL	< RL	< RL
Benzylbutyl phthalate (BBP)	85-68-7	%	0.01	< RL	< RL	< RL
Diisobutyl phthalate (DIBP)	84-69-5	%	0.01	< RL	< RL	< RL
Diisononyl phthalate (DINP)	28553-12-0, 68515-48-0	%	0.01	< RL	< RL	< RL
Diisodecyl phthalate (DIDP)	26761-40-0, 68515-49-1	%	0.01	< RL	< RL	< RL
Di-n-pentyl phthalate (DnPP)	131-18-0	%	0.01	< RL	< RL	< RL
Di-n-hexyl phthalate (DnHP)	84-75-3	%	0.01	< RL	< RL	< RL
Dicyclohexyl phthalate (DCHP)	84-61-7	%	0.01	< RL	< RL	< RL
Conclusion: CPSIA Section 108 as amended by 16 CFR 1307				Pass	Pass	Pass
Conclusion: CA Prop 65 DEHP, BBP, DBP, DIDP and DnHP content				Pass	Pass	Pass

Test No. Material No.				T010 M011	T011 M012	T012 M014
Test Parameter	CAS NO	Unit	RL	Result	Result	Result
Diethylhexyl phthalate (DEHP)	117-81-7	%	0.01	< RL	< RL	< RL
Dibutyl phthalate (DBP)	84-74-2	%	0.01	< RL	< RL	< RL
Benzylbutyl phthalate (BBP)	85-68-7	%	0.01	< RL	< RL	< RL
Diisobutyl phthalate (DIBP)	84-69-5	%	0.01	< RL	< RL	< RL
Diisononyl phthalate (DINP)	28553-12-0, 68515-48-0	%	0.01	< RL	< RL	< RL
Diisodecyl phthalate (DIDP)	26761-40-0, 68515-49-1	%	0.01	< RL	< RL	< RL
Di-n-pentyl phthalate (DnPP)	131-18-0	%	0.01	< RL	< RL	< RL
Di-n-hexyl phthalate (DnHP)	84-75-3	%	0.01	< RL	< RL	< RL
Dicyclohexyl phthalate (DCHP)	84-61-7	%	0.01	< RL	< RL	< RL
Conclusion: CPSIA Section 108 as amended by 16 CFR 1307				Pass	Pass	Pass
Conclusion: CA Prop 65 DEHP, BBP, DBP, DIDP and DnHP content				Pass	Pass	Pass

**Test Report No.: 158277008a 001**

Page 14 of 16

Test No. Material No.				T013 M015 + M018	T014 M016	T015 M017
Test Parameter	CAS NO	Unit	RL	Result	Result	Result
Diethylhexyl phthalate (DEHP)	117-81-7	%	0.01	< RL	< RL	< RL
Dibutyl phthalate (DBP)	84-74-2	%	0.01	< RL	< RL	< RL
Benzylbutyl phthalate (BBP)	85-68-7	%	0.01	< RL	< RL	< RL
Diisobutyl phthalate (DIBP)	84-69-5	%	0.01	< RL	< RL	< RL
Diisononyl phthalate (DINP)	28553-12-0, 68515-48-0	%	0.01	< RL	< RL	< RL
Diisodecyl phthalate (DIDP)	26761-40-0, 68515-49-1	%	0.01	< RL	< RL	< RL
Di-n-pentyl phthalate (DnPP)	131-18-0	%	0.01	< RL	< RL	< RL
Di-n-hexyl phthalate (DnHP)	84-75-3	%	0.01	< RL	< RL	< RL
Dicyclohexyl phthalate (DCHP)	84-61-7	%	0.01	< RL	< RL	< RL
Conclusion: CPSIA Section 108 as amended by 16 CFR 1307				Pass	Pass	Pass
Conclusion: CA Prop 65 DEHP, BBP, DBP, DIDP and DnHP content				Pass	Pass	Pass

Test No. Material No.				T016 M020 + M021	T017 M022	T018 M023 + M024 + M025
Test Parameter	CAS NO	Unit	RL	Result	Result	Result
Diethylhexyl phthalate (DEHP)	117-81-7	%	0.01	< RL	< RL	< RL
Dibutyl phthalate (DBP)	84-74-2	%	0.01	< RL	< RL	< RL
Benzylbutyl phthalate (BBP)	85-68-7	%	0.01	< RL	< RL	< RL
Diisobutyl phthalate (DIBP)	84-69-5	%	0.01	< RL	< RL	< RL
Diisononyl phthalate (DINP)	28553-12-0, 68515-48-0	%	0.01	< RL	< RL	< RL
Diisodecyl phthalate (DIDP)	26761-40-0, 68515-49-1	%	0.01	< RL	< RL	< RL
Di-n-pentyl phthalate (DnPP)	131-18-0	%	0.01	< RL	< RL	< RL
Di-n-hexyl phthalate (DnHP)	84-75-3	%	0.01	< RL	< RL	< RL
Dicyclohexyl phthalate (DCHP)	84-61-7	%	0.01	< RL	< RL	< RL
Conclusion: CPSIA Section 108 as amended by 16 CFR 1307				Pass	Pass	Pass
Conclusion: CA Prop 65 DEHP, BBP, DBP, DIDP and DnHP content				Pass	Pass	Pass

**Test Report No.: 158277008a 001**

Page 15 of 16

Test No.				T019
Material No.				M026 + M027
Test Parameter	CAS NO	Unit	RL	Result
Diethylhexyl phthalate (DEHP)	117-81-7	%	0.01	< RL
Dibutyl phthalate (DBP)	84-74-2	%	0.01	< RL
Benzylbutyl phthalate (BBP)	85-68-7	%	0.01	< RL
Diisobutyl phthalate (DIBP)	84-69-5	%	0.01	< RL
Diisononyl phthalate (DINP)	28553-12-0, 68515-48-0	%	0.01	< RL
Diisodecyl phthalate (DIDP)	26761-40-0, 68515-49-1	%	0.01	< RL
Di-n-pentyl phthalate (DnPP)	131-18-0	%	0.01	< RL
Di-n-hexyl phthalate (DnHP)	84-75-3	%	0.01	< RL
Dicyclohexyl phthalate (DCHP)	84-61-7	%	0.01	< RL
Conclusion: CPSIA Section 108 as amended by 16 CFR 1307				Pass
Conclusion: CA Prop 65 DEHP, BBP, DBP, DIDP and DnHP content				Pass

**Abbreviation:** < = less than  
 RL = Reporting Limit  
 % = percentage

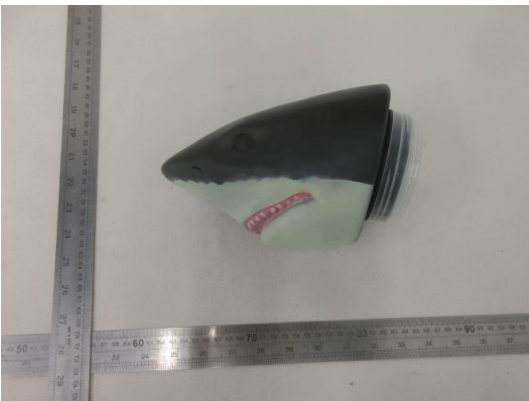
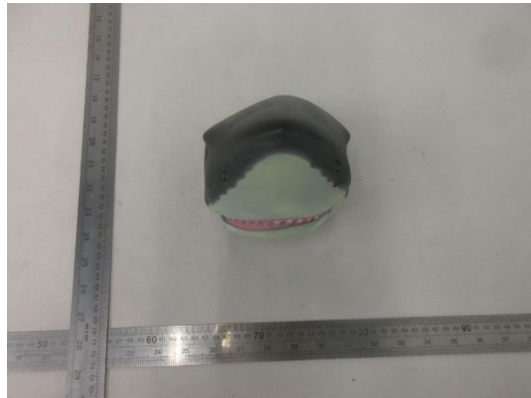
**Remark:**

- Requirement of Consumer Product Safety Improvement Act 2008, section 108, as amended by 16 CFR 1307 is summarized below:

Parameter	Unit	Maximum Permissible Limit
Accessible plasticized components in children's toy or childcare article:		
Dibutyl phthalate (DBP), Benzylbutyl phthalate (BBP), Diethylhexyl phthalate (DEHP), Diisononyl phthalate (DINP), Diisobutyl Phthalate (DIBP), Di-n-pentyl Phthalate (DPENP) (DnPP), Di-n-hexyl Phthalate (DHEXP) (DnHP), Dicyclohexyl Phthalate (DCHP)	%	0.1 (each)

- Requirement of Safe Drinking Water and Toxic Enforcement Act of 1986 (Proposition 65):DEHP, BBP, DBP, DIDP and DnHP content  
 1,000ppm (0.1%) each as quoted from County of Alameda Case No. BG-07350969

Sample Photos



- END -



This GTCB is only used for TÜV Rheinland Business Stream Product  
Version 5.0/February 2023